

---

IN THE SUPREME COURT OF ILLINOIS

---

CORRINE THOMPSON, individually and as Independent Administrator  
of the Estate of TREVOR THOMPSON, deceased, and the Independent  
Administrator of the Estate of AMBER THOMPSON, Deceased,

*Plaintiff-Appellee,*

vs.

CHRISTIE GORDON, GRAND AVENUE PROPERTIES, INC., GURNEE  
MILLS (MLP) LIMITED PARTNERSHIP, f/k/a GURNEE MILLS LIMITED  
PARTNERSHIP, GURNEE PROPERTIES ASSOCIATED LIMITED  
PARTNERSHIP, an Illinois limited partnership, WESTERN DEVELOPMENT  
CORPORATION, a foreign corporation, THE MILLS CORPORATION,  
a foreign corporation, THE MILLS LIMITED PARTNERSHIP,  
an Illinois limited partnership, GURNEE MILLS II, LLC, an Illinois limited  
partnership, and GURNEE MILLS, LLC, an Illinois limited partnership,

*Defendants,*

and

JACK E. LEISCH AND ASSOCIATES,  
INC., a corporation, CH2M HILL, INC., a foreign corporation,

*Defendants-Appellants.*

---

TABLE OF CONTENTS TO APPENDIX FOR THE  
BRIEF *AMICUS CURIAE* OF  
THE ILLINOIS SECTION OF THE AMERICAN  
SOCIETY OF CIVIL ENGINEERS AND  
THE ASSOCIATION OF LICENSED ARCHITECTS  
IN SUPPORT OF  
JACK E. LEISCH AND ASSOCIATES, INC. AND CH2M HILL, INC.

---

<u>Tab</u>	<u>Page Nos.</u>	<u>Description</u>
1	A1-A7	Background documents on the American Society of Civil Engineers
2	A8-A14	Background documents on the Association of Licensed Architects

- 3        A15-A17        List of IDOT Construction Guides, Contractor Services, Manuals, Memoranda, Rules, etc. from <http://www.idot.state.il.us.dobuisns.html>
- 4        A18-A22        Illinois Highway Code Section 4-101, *et seq.* (605 ILCS 5/4-101)
- 5        A23-A38        Table of Contents to IDOT's Standard Specifications for Road and Bridge Construction pp. 1-1165
- 6        A39-A54        ISTHA 2009 Annual Report
- 7        A55-A84        Illinois Toll Highway Act (605 ILCS 10/1, *et seq.*)
- 8        A85-A188        ISTHA Traffic Barrier Guidelines
- 9        A189-A190        Illinois Tollway Press Release, dated September 18, 2009
- 10       A191            Photographs taken on June 29, 2010 of the median barrier installed on Grand Avenue as part of 2009 reconstruction
- 11       A192            Design Plan Cover Sheet for reconstructed "Grand Avenue Over I-94," dated May 2, 2008
- 12       A193-A197        Summary of OSHA's role in the workplace from <http://www.osha.gov/workers.html>
- 13       A198-A204        Congressional statement of findings and declaration of purpose and policy for OSHA (29 U.S.C.A § 651)
- 14       A205-A218        Background documents on the role of the City of Chicago Department of Buildings and construction process for buildings in the City of Chicago
- 15       A219-A221        Table of Contents to the City of Chicago Building Code

# EXHIBIT

1



## ASCE in Brief

[Home](#)

Founded in 1852, the American Society of Civil Engineers (ASCE) represents more than 144,000 members of the civil engineering profession worldwide and is America's oldest national engineering society.

### ASCE's Aims

To provide essential value to our members, their careers, our partners, and the public, ASCE will:

- Facilitate the advancement of technology
- Encourage and provide the tools for lifelong learning
- Promote professionalism and the profession
- Develop and support civil engineer leaders
- Advocate infrastructure and environmental stewardship.

[View our mission and goals.](#)

[Open Positions](#)

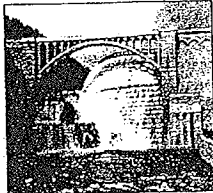
[Copyright © 1996 - 2010, American Society of Civil Engineers](#)   [Copyright](#)   [FAQs](#)   [Privacy](#)   [Questions](#)   [Terms & Conditions](#)

[Sitemap](#)

## History of ASCE

Home

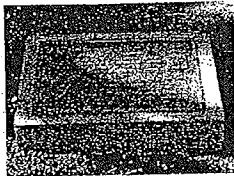
When the twelve Founders gathered at the Croton Aqueduct on November 5, 1852, and agreed to incorporate the American Society of Civil Engineers and Architects, one can only wonder if they dreamed the profound significance and long-lasting impact ASCE would have on the overall development of society. They laid a foundation for what proves to be one of the most prominent engineering societies in the world.



*Croton Aqueduct, New York*

With projects such as the Croton Aqueduct in New York State, civil engineers work to improve the lives of everyone.

Simply stated, civil engineers are creative, people-serving and problem-solving leaders who make our lives easier to live from one day to the next.



On June 16, 1981, the ASCE Metropolitan Section unveiled a plaque on the site of ASCE's founding near the southwest corner of Chambers and Centre Streets in City Hall Park. This plaque commemorates 1852 the meeting of this small group of civil engineers that took place in the office of Alfred W. Craven, then the eminent Chief Engineer of the Croton Aqueduct for the City of New York. The Croton Aqueduct Department was located in the Rotunda Building, which no longer exists.

As civil engineering begins a new millennium, the American Society of Civil Engineers not only reflects on the profession's rich heritage, but equipped with this knowledge, ASCE continues to develop flexible, forward-thinking plans for the future of the society and the civil engineering profession.

Today ASCE is a worldwide leader for excellence in civil engineering. With a mission to advance professional knowledge and improve the practice of civil engineering, ASCE is a focal point for the development and transfer of research results, and technical policy and managerial information. Through strategic emphasis in key areas, including infrastructure renewal and development, policy leadership and professional development, ASCE delivers the highest quality publications, programs and services to its worldwide membership, demonstrating a daily commitment to sustaining the profession.

Copyright © 1996 - 2010, American Society of Civil Engineers

Copyright    FAQs    Privacy    Questions    Terms & Conditions

Sitemap



## Vision, Mission & Goals

[Home](#)

### [ASCE Vision](#)

Engineers as global leaders building a better quality of life.

### [ASCE Mission](#)

To provide essential value to our members, their careers, our partners, and the public, ASCE will:

- Facilitate the advancement of technology
- Encourage and provide the tools for lifelong learning
- Promote professionalism and the profession
- Develop and support civil engineer leaders
- Advocate infrastructure and environmental stewardship.

### [ASCE Goals](#)

- Facilitate the advancement of technology to enhance quality, knowledge, competitiveness, sustainability, and environmental stewardship.
- Encourage and provide the tools for lifelong learning to aid our members' continued growth throughout their careers.
- Promote professionalism and the profession throughout society to enhance the stature of civil engineers and to influence public policy.
- Develop and support civil engineer leaders to broaden our members' perspectives, enhance their career growth, and promote the public interest.
- Advocate infrastructure and environmental stewardship to protect the public health and safety and improve the quality of life.

[See ASCE's Priority Strategies](#)

[Copyright © 1996 - 2010, American Society of Civil Engineers](#)   [Copyright](#)   [FAQs](#)   [Privacy](#)   [Questions](#)   [Terms & Conditions](#)

[Sitemap](#)



## Leadership & Organization

Home

View information on ASCE Leadership; Membership; Institutes; Regions, Sections and Branches; and the Foundation.

### Leadership

ASCE is led by a 17-member Board of Direction. The 2009-2010 officers are:



*President*

Blaine D. Leonard, P.E., D.GE, F.ASCE



*Past President*

Wayne Klotz, P.E., D.WRE, F.ASCE



*President-elect*

Kathy J. Caldwell, P.E., M.ASCE

The Society's Executive Director Patrick J. Natale, P.E., F.ASCE, CAE, leads the Society's 236 staff members.

### Membership

ASCE's membership is 144,000 as of October, 2009. The Society is organized into nearly 400 local affiliates, which include 87 Sections, 158 Branches and 130 Younger Member Groups.

The Society serves approximately 14,000 international members, has Agreements of Cooperation with 72 engineering organizations in 59 countries, and supports 12 International Sections and 19 International Groups.

### Institutes

The Society has eight Institutes created to serve professionals working within specialized fields of civil engineering, including

Architectural Engineering Institute (AEI) – 8,334 members  
 Coasts, Oceans, Ports and Rivers Institute (COPRI) – 3,944 members  
 Construction Institute (CI) – 17,956 members  
 Engineering Mechanics Institute (EMI) – 1,950 members  
 Environmental and Water Resources Institute (EWRI) -- 23,385 members  
 Geo-Institute (G-I) -- 10,754 members  
 Structural Engineering Institute (SEI) -- 21,008 members  
 Transportation and Development Institute (T&DI) – 15,479 members

Membership numbers accurate as of the publication date of the 2010 Official Register.

ASCE's Technical Activities Committee (TAC) has 10 Divisions and Councils, including

Aerospace Engineering  
 Cold Regions Engineering  
 Computing in Civil Engineering  
 Energy  
 Forensics Engineering  
 Geomatics  
 Lifeline Earthquake Engineering  
 Disaster Risk Management  
 Pipelines  
 Sustainability

### Regions, Sections and Branches

ASCE's Sections and Branches allow civil engineers who live and/or work in the same community to network, exchange ideas, build leadership skills and create lifelong professional connections. Sections and Branches are continually looking for motivated volunteers.

### ASCE Foundation

To support the civil engineering profession, the ASCE Foundation has raised more than \$23 million since it's founding in 1994. The Foundation's programs include an annual appeal, sponsorships, major gifts, capital campaigns and planned giving, and as a 501(c)(3) tax-exempt organization. All gifts to the Foundation are tax-deductible to the fullest extent of the law. To learn more about the ASCE Foundation, visit [www.asce.org/foundation](http://www.asce.org/foundation).

[Copyright © 1996 - 2010, American Society of Civil Engineers](#)   [Copyright](#)   [FAQs](#)   [Privacy](#)   [Questions](#)   [Terms & Conditions](#)

[Sitemap](#)





## Board of Direction

Home / Knowledge & Learning / People & Projects

### *President*

Blaine D. Leonard, P.E., D.GE., F.ASCE  
Utah Department of Transportation, Research Division

### *President-Elect*

Kathy J. Caldwell, P.E., M.ASCE  
Caldwell Cook & Associates

### *Past President*

D. Wayne Klotz, P.E., D.WRE., F.ASCE  
Klotz Associates Inc.

N. Catherine Bazan-Arias, Ph.D., P.E., M.ASCE, At-Large  
DiGioia, Gray & Associates, LLC

Reza Darvishian, P.E., F.ASCE, Region 2  
U.S. Department of State

Kancheepuram N. Gunalan, Ph.D., P.E., M.ASCE, Region 8  
PB Americas, Inc., Parsons Brinckerhoff

Sandra N. Knight, P.E., F.NSPE, F.ASCE, Region 4  
Bradley County Government

Potenciano A. Leoncio, Jr., P.E., Ph.D., M.ASCE, Region 10  
P.A. Leoncio, Jr. & Associates

Eriks V. Ludins, P.E., M.ASCE, Region 3  
St. Paul Public Works Department

Norma Jean Mattei, Ph.D., P.E., M.ASCE, Region 5  
University of New Orleans, Department of Civil and Environmental Engineering

Anthony M. Puntin, P.E., M.ASCE, Region 1  
The Louis Berger Group, Inc.

David M. Schnurbusch, P.E., F.ASCE, Region 6  
USA Professional Services Group, Inc.

Ronald E. Smith, Ph.D., P.E., D.GE., M.ASCE, Technical Region  
Geotechnical Consultant

Charles R. Spinks, P.E., M.ASCE, Region 9  
Kimley-Horn and Associates, Inc.

Robert D. Stevens, Ph.D., P.E., F.ASCE, Technical Region  
ARCADIS

Robert W. Stokes, Ph.D., F.ASCE, Region 7  
Kansas State University, Department of Civil Engineering

Kevin C. Womack, Ph.D., P.E., M.ASCE. At-Large  
Utah State University, Civil and Environmental Engineering Department

*Secretary*

Patrick J. Natale, P.E., CAE, F.ASCE

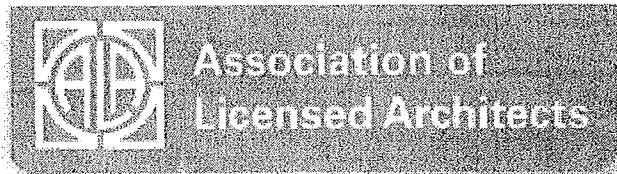
*Treasurer*

Andrew W. Herrmann, P.E., SECB, F.ASCE  
Hardesty & Hanover, LLP

Copyright © 1996 - 2010, American Society of Civil Engineers    Copyright    FAQs    Privacy    Questions    Terms & Conditions  
Sitemap

# EXHIBIT

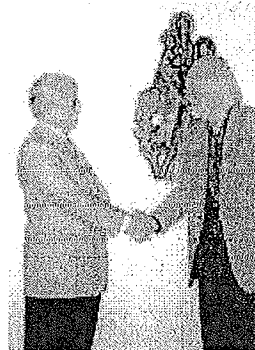
2


[Home Page](#)
[Association](#)
[Magazine](#)
[LEED](#)
[Continuing Ed](#)
[Association](#)
[Members Only](#)

## General Information

**ALA** (The Association of Licensed Architects) is an organization open to all architects and professions related to architecture. It represents architects registered or licensed in any state, territory or possession of the United States, and foreign countries. ALA is committed to expanding its membership and professional services.

ALA was founded in the fall of 1999 by a group of architects who formerly served as Board Members of other Architects' Associations. In November of 1999, ALA was joined by ISA (Illinois Society of Architects), the oldest independent state organization in the country, which brought valued expertise and historic significance to the Association. Over the past few years, ALA experienced rapid growth, founded the Illinois and Wisconsin chapters, had record attendance at its dynamic programs and made great progress under the leadership of the President, the Executive Board, and stewardship of the Executive Director. It continues to charge affordable dues, offer and expand its real services, and publishes the professional magazine with its superior reputation for content, technical information and featured member architects.



ALA's mission is to advance the Architectural Profession through education and by supporting and improving the profession's role in the built environment.

ALA's vision is to positively impact the Architectural Profession through the power of organization. Its purpose is to unite, educate, promote, and advance the architectural profession and address critical issues confronting it. ALA will support the efforts of other Associations, when combined efforts will produce benefits for all.

ALA will work and speak for members of the architectural profession and improve communication with the community through programs offering information, education and cooperation. It proposes to advance and contribute to the general health, safety and welfare of the general public and believes in stimulating and encouraging continuing education plus the advancement of the art and science of architecture.

ALA's motto is: "Architects united to advance the Profession of Architecture."

## Public Relations

- **Consortium for Design and Construction**

ALA is a member of the Consortium for Design and Construction Careers which is comprised of colleges, universities, and professional organizations interested in informing individuals about careers in architecture, interior design, construction management and landscape architecture. Colleges from all over the USA are represented.

- **AHEAD Consortium**

ALA is the architectural liaison on the committee monitoring the reinstatement of the Structural

Work Act and other legislation related to the design and construction profession.

- **PAC (Political Action Committee)**  
Financial contribution and support.
- **Illinois Department of Professional Regulation** Monitoring proposed amendments.
- **Universities with Architectural Programs**  
Dedicated to improving communication between universities and professionals. Magazines are donated to school libraries and classes.

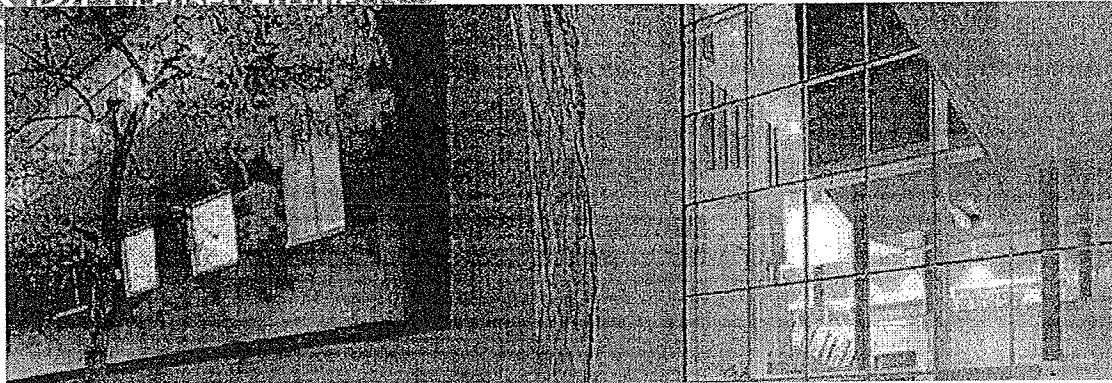
**Association of Licensed Architects**  
22159 N. Pepper Road Barrington, IL 60010  
Phone: (847) 382-0630/Fax:847-382-8380  
[ala@licensedarchitect.org](mailto:ala@licensedarchitect.org)

Webmaster: [M.E. Moloney](mailto:M.E.Moloney)



[About Us](#) [Join](#) [Contact Us](#) [Find a Member](#) [Login](#) [Search](#)

[Careers](#) [Education](#) [ALA Contracts](#) [Awards](#) [Chapters](#) [Resources](#)



University of Illinois-Chicago Student Recreational Facility

Chicago, IL

PSA-Dewberry

About Us

[About Us](#)

[ALA Board of Directors](#)

[Founding Members of ALA](#)

### About ALA

**The Association of Licensed Architects (ALA)** is an organization open to all architects and professions related to architecture. It represents architects registered or licensed in any state, territory or possession of the United States or foreign country.

ALA was founded in 1999 by architects who previously served as Board Members of other architects' associations. Shortly thereafter the Illinois Society of Architects (ISA), the oldest independent state organization in the country, combined efforts with ALA, bringing respected expertise and historic significance to the Association.

Our founders formed ALA in order to provide **value** to architects. Affordable products and services that enable architects stay current with industry best practices, maintain their licenses, and provide quality service to the public. That philosophy remains the driving force behind ALA today.

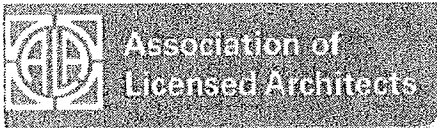
Commitment of **service** to our members and the friendliness of ALA staff have been factors in the Association's rapid growth. Membership has increased more than 260% over the last 10 years, and ALA now has members across the United States and in some foreign countries.

**ALA is here to help you achieve your professional goals *today* and *tomorrow*.**

[Join](#) [Home](#) [Rules of Use](#) [Site Map](#)

#### ALA Mission

To advance the architectural profession through education and by supporting and improving the profession's role in the built environment.



- [About Us](#)
- [Join](#)
- [Contact Us](#)
- [Find a Member](#)
- [Login](#)
- [Search](#)
- [Careers](#)
- [Education](#)
- [ALA Contracts](#)
- [Awards](#)
- [Chapters](#)
- [Resources](#)



## ALA National Board of Directors

ALA is led by the following committed group of volunteers:

[About Us](#)

[About Us](#)

[ALA Board of Directors](#)

[Founding Members of ALA](#)

- President**

Steven H. Pate, FALA  
 Ruck/Pate Architecture  
 T. 847.381.2946  
 E. spate@ruckpate.com
- Vice President**

James K. Zahn, Esq., FALA  
 Sabo & Zahn, Attorneys at Law  
 T. 312.655.8620  
 E. jzahn@sabozahn.com
- Treasurer**

Patrick C. Harris, FALA  
 Harris Architects, Inc.  
 T. 847.303.1155  
 E. pharris@harrisarchitects.com
- Secretary**

Mark V. Spann, FALA, LEED AP  
 GSA Public Buildings Service  
 T. 312.886.5610  
 E. mark.spann@gsa.gov
- Directors**

James Belli, FALA  
 Belli & Belli Architects & Engineers  
 T. 847.520.1700  
 E. jim@belli-belli.com

Richard Brownlee, ALA  
 Station 19 Architects, Inc.  
 T. 612.623.1800  
 E. rbrownlee@station19.com

Jeffrey Budgell, ALA, LEED AP  
 Architect's Studio, Ltd.  
 T. 630.617.5990  
 E. jbudgell@architectsstudioinc.com

Rick Gilmore, FALA  
 Gilmore Architects  
 T. 847.428.2455  
 E. gilmorearch@dls.net

Jeff Whyte, ALA  
 Architect Jeff Whyte and Associates  
 T. 847.490.0094  
 E. jeff@jeffwhyte.com

Horatiu Wolff, FALA  
 H. Wolff@Associates, Ltd.  
 T. 847.729.1396  
 E. h\_wolff@msn.com
- Chair of Delegates Committee**

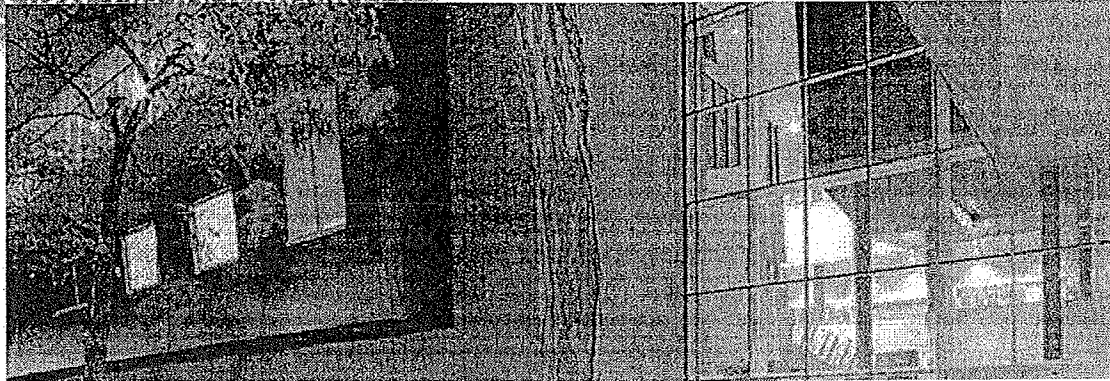
Douglas A. Gallus, FALA  
 Gallus Architects  
 T. 414.259.9555  
 E. dgallus@sbcglobal.net
- Affiliate Director**

Tom Harkins  
 Willis HRH Insurance  
 T. 847.517.3450  
 E. tom@avains.com

- 
- [Join](#)
  - [Home](#)
  - [Rules of Use](#)
  - [Site Map](#)



- [About Us](#)
- [Join](#)
- [Contact Us](#)
- [Find a Member](#)
- [Login](#)
- [Search](#)
- [Careers](#)
- [Education](#)
- [ALA Contracts](#)
- [Awards](#)
- [Chapters](#)
- [Resources](#)



University of Illinois-Chicago Student Recreational Facility  
Chicago, IL  
PSA-Dewberry

Chapters

- [ALA - Illinois](#)
- [ALA - Minnesota](#)
- [ALA - Missouri](#)
- [ALA - Ohio](#)
- [ALA - Wisconsin](#)

ALA - Illinois

The Association of Licensed Architects - Illinois Chapter was formed in 2005. Our chapter serves over 900 professional, affiliate and student members throughout the state.

ALA - Illinois provides our members with high-quality continuing education programs. Monthly seminar topics range from current building trends and techniques to business strategies to tours of buildings with architectural interest. All programming is approved for state required continuing education requirements with most offering health, safety and welfare (HSW) credit. Over 80 members enrolled in our LEED exam study groups to help facilitate LEED AP accreditation.

Our annual Illinois Student Merit Award acknowledges a student from each of the architectural accredited college programs in the state with a cash award. Selected students have shown outstanding academic achievement and leadership skills.

In 2007, ALA - Illinois formed an alliance with Habitat for Humanity - South Suburbs. Our members have dedicated their time and design expertise in providing stamped plans for homes plus we sponsor a Habitat Workday in the summer. This rewarding experience allows architects a chance to work together while providing much needed housing for deserving families.

We hope you will take a look at our program schedule and join us at one of the events. Non-members are welcome and always feel free to contact our Executive Director or board members with any questions.

Lisa Brooks, Executive Director  
ALA Illinois  
22159 N. Pepper Road, Ste. 2N  
Barrington, IL 60010  
P: 847-382-0630  
E: [Lisa@LicensedArchitect.org](mailto:Lisa@LicensedArchitect.org)

January 20	The Chicago Permit Process
February 23	Building Envelope Moisture Problems from Three Perspectives - AM in Chicago, PM in Rolling Meadows
May 12	Current Trends in Lighting
December	Annual Meeting

- [Join](#)
- [Home](#)
- [Rules of Use](#)
- [Site Map](#)

- [Program Registration - See Education/Live Events](#)
- [2010 ALA - Illinois Board of Directors](#)
- [2009 Illinois Student Award Recipients](#)
- [Illinois Dept. of Financial & Professional Regulation](#)
- [Illinois Architecture Practice Act](#)